



Okavango Delta



INTRODUCTION:

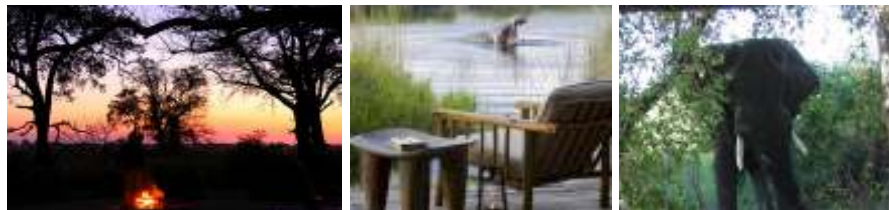
Botswana is one of the few remaining destinations in Africa that still provides a good sense of adventure while on safari. Its expansive game parks and preserves, while offering wildlife as diverse and abundant as that found anywhere else, are still largely undeveloped and untamed. Botswana lies immediately to the north of South Africa. It is bordered on the north and west by Namibia, on the north and east by Zimbabwe, and is connected by a narrow strip of land on the northern border to Zambia. Its territory consists almost entirely of a broad, flat, arid subtropical plateau, though there are hills in the eastern part of the country. In the northwest, the Okavango River empties into the Kalahari sands, creating the largest inland river delta in the world. While the Okavango Delta is home to relatively few large game animals in comparison to other areas of Botswana, its clear waters and myriad small islands are home to an astounding variety of birds, plants, and smaller species of animals. Nearby is Chobe National Park, a beautiful grassland reserve that has gained international fame for its abundant elephant population. Southeast of Chobe are Botswana's enormous Makgadikgadi salt pans, home to large herds of blue wildebeest, several antelope species, and those international lovers of salt pans, flamingos. Almost the entire remaining portion of the country is covered by the Kalahari Desert - a varied environment of sand, savanna, and grassland. Although this area of Botswana is only sparsely inhabited by humans, it is one of the richest wildlife regions in all of Africa. Botswana's two largest parks, the Central Kalahari Game reserve and Gemsbok National Park, are found in this region.

ITINERARY

Day 1: Maun International Airport – Moremi Game Reserve

Upon arrival at the International Airport of Maun a representative will meet you. Once the group is fully assembled we leave Maun and head for Moremi Game Reserve. Most of our day is spent game viewing on the way to and through the reserve, with lunch en route. We arrive in camp late afternoon with enough time to familiarise ourselves with the surroundings and the camp setup and settle into our tents. We will have an excellent dinner in camp, prepared by our ever-cheerful bush chefs and can continue to sit around a roaring camp-fire afterwards or retire to get a good night of sleep in a comfortable bed.

<i>Accommodation:</i>	<i>Moremi Game Reserve – Xaxanaka area</i>
<i>Meals:</i>	<i>Breakfast / Lunch / Dinner</i>
<i>Included activities:</i>	<i>Game viewing en-route to campsite</i>
<i>Optional activities:</i>	<i>N.A.</i>



Overnight at Moremi Game Reserve – Xaxanaka Area

Day 2: Moremi Game Reserve

After a good night's sleep we will rise early the next morning and greet the fresh African morning with coffee and a biscuit before we head out again. Early morning offers a better opportunity to view predators. We spend the morning on a game drive before returning to camp for brunch. The afternoon can be spent at your own leisure, taking in the surroundings. Late afternoon takes us back out on a game drive in search of new sightings.

<i>Accommodation:</i>	<i>Moremi Game Reserve – Xaxanaka area</i>
<i>Meals:</i>	<i>Brunch / Dinner</i>
<i>Included activities:</i>	<i>Early morning and late afternoon game drives</i>
<i>Optional activities:</i>	<i>N.A.</i>

Overnight at Moremi Game Reserve – Xaxanaka Area

Day 3: Moremi Game Reserve

Today we break camp and head to the eastern section of Moremi. Our drive takes us through Mopani forests and open plains where we will see animals in their natural habitat and have lunch en-route. We arrive in our new camp late afternoon. A short evening game drive rounds off the day and we again enjoy a delicious dinner.

The Okavango Delta holds an incredible ninety-five percent of the country's total surface water in an inland Delta fed by the mighty Okavango River. Unlike every other major river on the planet, the Okavango never reaches the ocean, but disappears in an endless web of lagoons and lush wetlands. The pristine landscape and diverse wildlife of this unique territory make it one of Africa's prime tourist destinations.

<i>Accommodation:</i>	<i>Moremi Game Reserve – Khwai River area</i>
<i>Meals:</i>	<i>Breakfast / Lunch / Dinner</i>
<i>Included activities:</i>	<i>Game viewing en-route to campsite & short evening game drive</i>
<i>Optional activities:</i>	<i>N.A.</i>



Overnight at Moremi Game Reserve – Khwai River Area

Day 4: Moremi Game Reserve

We start our day with an early game drive and go in search of animals. There is also the option of a game walk with an armed ranger as we are in Big 5 territory. Due to the different vegetation in this area there is the possibility of seeing a rare sighting. We return to camp for a delicious brunch and enough time in the afternoon to catch up on those postcards. We then venture out again this afternoon for another game drive. We should be back in the camp in time for sundowners and dinner.

Accommodation: Moremi Game Reserve – Khwai River area
Meals: Brunch / Dinner
Included activities: Early morning game drive or hike & afternoon game drive
Optional activities: N.A.

Overnight at Moremi Game Reserve – Khwai River Area

Day 5: Moremi Game Reserve – Chobe National Park

Today we drive one of our longest drives. We leave Moremi Game Reserve via the Mababe Sand Ridge and enter the Chobe National Park, stopping for lunch en-route, arriving at our new camp in Savute in the late afternoon. Savute is a well-documented area where National Geographic has filmed a large amount of films and programs. Our staff will already have set up the new camp and have dinner cooking.

The Chobe National Park sprawls across 11 700 square km of open grassland, Mopani forests and acacia scrub. The Chobe was once a veritable crossroads for traders and explorers. The indomitable David Livingstone travelled through the Savute marsh in 1851, which he referred to as a “dismal swamp”. The marsh was formed by the Savute channel, a watercourse that once flowed out of the Linyanti, but dried up in the 1980s. Today the Savute swamp is dry grassland while the channel is a dry fissure carved in the earth.

Accommodation: Chobe National Park - Savute area
Meals: Breakfast / Lunch / Dinner
Included activities: Game viewing en-route to campsite
Optional activities: N.A.



Overnight at Chobe National Park – Savute Area

Day 6: Chobe National Park

We rise early this morning and go in search of the movie stars of Africa. Savute has no permanent water, except that of underground water that is pumped into waterholes scattered throughout the park. At certain times of the year when there is no natural water in catchment areas these waterholes teem with wildlife and we can expect to see up to fifty bull elephants queuing to drink. We return to camp for lunch and have some time to relax before venturing out again in the late afternoon. We return to camp in time for dinner and refreshments around the campfire.

Accommodation: Chobe National Park - Savute area
Meals: Breakfast / Lunch / Dinner
Included activities: Morning & afternoon game drives
Optional activities: N.A.

Overnight, Full Board at Chobe National Park – Savute Area

Day 7: Chobe National Park

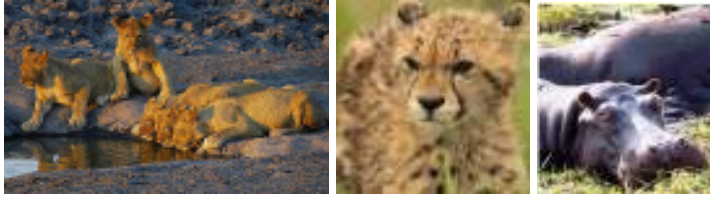
Today we leave the dry area of Savute and head north to the perennial Chobe River. This riverfront is well known for its abundance of breeding herds of elephant and buffalo, as well as attracting all other game in search of water.

We have lunch en route and a short game drive along the Chobe River in search of animals, before returning to camp for dinner.

The Chobe Riverfront covers a stretch of only 15km, but nevertheless constitutes the most popular part of the park and the well-developed road network allows high volumes of visitors to view the even higher concentrations of game. The Chobe River becomes a vital water supply in the dry season, attracting large herds of elephant and buffalo along its banks. The elephant population is legendary, swelling to over 50 000

- equivalent to more than five per square kilometre - a density three times higher than the human population!

Accommodation: Chobe National Park – Northern Chobe area
Meals: Breakfast / Lunch / Dinner
Included activities: Game viewing en-route to campsite & short afternoon game drive
Optional activities: N.A.



Overnight at Chobe National Park – Northern Chobe Area

Day 8: Chobe National Park

Today we will rise early in time to catch the morning game before the heat of the day sends them into hiding. We return to camp for brunch. We venture out again in the warm afternoon for a boat cruise on the Chobe River. Our bush chefs will once again make us delicious dinner before we retire for the night.

Accommodation: Chobe National Park – Northern Chobe area
Meals: Brunch / Dinner
Included activities: Early morning game drive & afternoon boat cruise
Optional activities: N.A.

Overnight at Chobe National Park – Northern Chobe Area

Day 9: Chobe National Park – Zambezi Sun Hotel (Zambia)

We pack up and leave Chobe National Park. We drive a short distance before crossing the Chobe/Zambezi River on the Kazangula ferry. We then head to our lodge on the Zambian side of Victoria Falls, the impressive Zambezi Sun Hotel which overlooks the falls.

Accommodation: Zambezi Sun Hotel
Meals: Breakfast
Included activities: Scenic drive to Zambezi River for ferry transfer with game viewing en-route
Optional activities: N.A.



Overnight, Bed and Breakfast at Zambezi Sun Hotel (Zambia)

Day 10: Zambezi Sun Hotel

Today we have a day of leisure. We can view the Victoria Falls, go shopping, try a few adrenalin sports or relax around the swimming pool. There are numerous activities offered in and around Livingstone & Victoria Falls, so please ask the hotel for details.

The Zambezi Sun is located on the edge of the Eastern Cataract of the Victoria Falls. This appealing family hotel is constructed in a series of eight buildings, consisting of the guest rooms, a central pavilion of restaurants and a fabulous convention centre. The hotel features a large variety of amenities amongst them the children's activity centre, Kamp Kwena. Test your spirit with some thrilling, heart stopping adventure challenges.

The great and famous falls, named by Dr. David Livingstone for Queen Victoria, in November of 1855. The Falls are 1690m wide and have a maximum drop of 103m (the average drop is 92m). This immense curtain of water is broken up by small islands, which stand on the lip of the falls, one of which is called Livingstone Island from hence the explorer first viewed the falls.

Accommodation: Zambezi Sun Hotel
Meals: Breakfast

Included activities: N.A.
Optional activities: For optional activities inquire at hotel reception for details and rates
Overnight, Bed and Breakfast at Zambezi Sun Hotel (Zambia)

Day 11: Zambezi Sun Hotel – Maun International Airport.

After breakfast this morning you will be transferred from the hotel to the airport and fly home, with fond memories and memorable photos.

Accommodation: Zambezi Sun Hotel
Meals: Breakfast
Included activities: N.A.
Optional activities: N.A.

End of Services.

INCLUDED IN PACKAGE:

Destinations: Moremi Game Reserve, Xaxanaka region, Khwai River area, Chobe National Park, Savute area, Kasane area, Livingstone & Victoria Falls
Date: 13th – 23rd March 2011
10th – 20th April 2011
15th – 25th May 2011
Duration: 11 Days / 10 Nights
Accommodation: En-suite accommodation & camping facilities at the following: Moremi campsite, Savute campsite, Northern Chobe campsite & Zambezi Sun Hotel
Transfers: Transfer from Kasane to Livingstone & Transfer from Livingstone Hotel to Livingstone Airport
Meals: Meals as listed in itinerary

EXCLUDED FROM PACKAGE:

- All International and/or Domestic flights and airport taxes
- Gratuities
- Optional activities
- Travel Insurance
- All laundry
- Beverages on days 9 & 10
- Lunch & Dinner on days 9 & 10 in Zambia
- Visas
- Items not specified

Please Note:

- The costing for the itinerary is based on a minimum of six (6) guests.
- This is a quotation and is valid for set departures for 2011 tours only.
- No reservations have been made and all accommodation, flights and transport are subject to availability.
- Should any of the accommodation mentioned not be available, we reserve the right to substitute it with an alternative suitable venue, which might affect the final quoted price.
- Quoted price is also subject to availability, fuel/gas price and possibly exchange rate fluctuations.
- 15% non-refundable deposit is required on confirmation of safari.
- Full payment is required sixty (60) days prior to arrival.